

# 129 S PUGH STREET

STATE COLLEGE, PA 16801

5,390 SF  
FOR LEASE



# 1ST FLOOR INTERIOR

129 S PUGH ST. | STATE COLLEGE, PA 16801



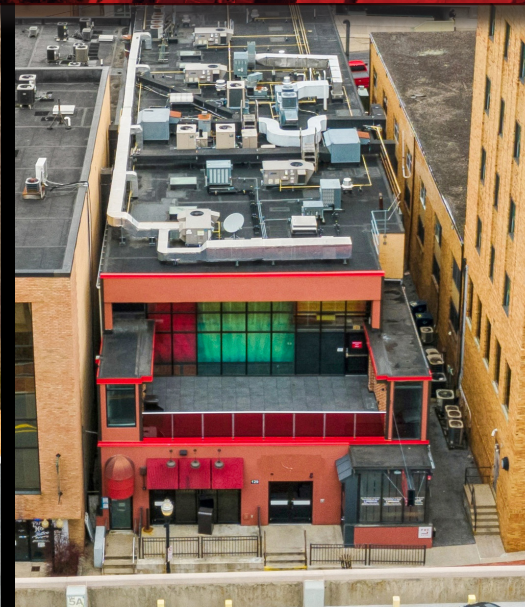
# BASEMENT OFFICES

129 S PUGH ST. | STATE COLLEGE, PA 16801



# EXTERIOR

129 S PUGH ST. | STATE COLLEGE, PA 16801



# DRONE

129 S PUGH ST. | STATE COLLEGE, PA 16801



# AERIAL

129 S PUGH ST. | STATE COLLEGE, PA 16801

## DEMOGRAPHICS

	1 MILE	3 MILE	5 MILE
TOTAL POPULATION	35,990	73,522	84,910
TOTAL EMPLOYEES	11,587	32,358	38,9710
AVERAGE HHI	\$61,028	\$96,021	\$104,555
TOTAL HOUSEHOLDS	8,547	27,034	32,455

## KEY FACTS

- Surrounded by National tenants
- Within 500 feet of over 1,500 student house units
- Renovated in 2015 specifically for Sheetz. **No expense spared!**
- Dedicated water line
- 3 phase power
- 5,390 total leasable area
- 1st floor 4,028 Sq Ft
- Basement: 753 Sq Ft
- 2nd Floor Outdoor Patio: 609 Sq Ft
- Pugh Street Parking Garage Across the street (491 Public Spaces) 24/7





**FOR MORE INFORMATION CONTACT:**

**STEVE GARTHWAITE, VP**

215.390.4549 | [STEVE@BENNETTREALTYLLC.COM](mailto:STEVE@BENNETTREALTYLLC.COM)



**OR CONTACT:**

**TYLER BENNETT, CEO / FOUNDER**

732.837.4153 | [TYLER@BENNETTREALTYLLC.COM](mailto:TYLER@BENNETTREALTYLLC.COM)



**BENNETT REALTY & DEVELOPMENT**  
LICENSED REAL ESTATE BROKERS  
NJ, NY, CT, PA

**NEW JERSEY**  
51 E. MAIN STREET  
HOLMDEL, NJ 07733

**PH 732.837.4060**  
**FAX 732.963.2433**  
**W [BENNETTREALTYLLC.COM](http://BENNETTREALTYLLC.COM)**

Although all information regarding property for sale, rental or financing is from sources deemed reliable such information has not been verified and no express representation is made nor is any to be implied as to the accuracy thereof, and it is submitted subject to errors, omissions, change of price, rental or other conditions, prior sale, lease or financing, or withdrawal with out notice.