



KIN'YA
RAMEN • SUSHI • BAR

**REAL ESTATE
DEVELOPMENT
2024**

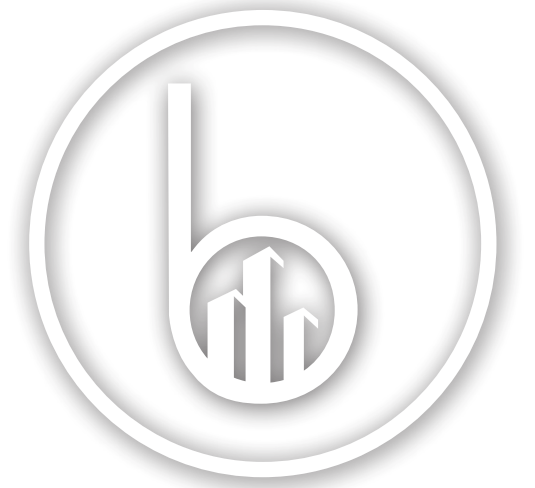


OUR STORY

Here at Kinya, we love ramen. We believe that there is nothing better in life than slurping down an amazing bowl of noodles and sipping on a perfect drink, all while enjoying great company and service. We love it so much that we decided to create a restaurant dedicated to creating that perfect ramen experience for everyone.

Our name, Kinya 金 - 屋 - (pr. keen ya), comes from the word for "Gold" in Japanese - and we take that to heart. We create contemporary Japanese cuisine and dishes with a bold and flashy golden twist. Our atmosphere and vibe is curated to create an exciting and enticing "Golden Experience". We have created signature Kinya Ramen, Sushi, and Cocktails topped with real 24k Gold flakes that are sure to get our community interested and excited about our restaurant. With our gold spirit, quality, and warmth we are confident that our patrons will have an amazing time.

Are you ready to go for the gold?



BY THE NUMBERS



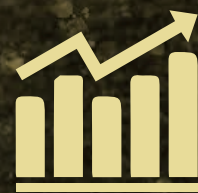
FOUNDED IN
2022



JULY 2022 LOCATIONS
10+



STATES
8+



GROWTH
100+ Stores by 2024



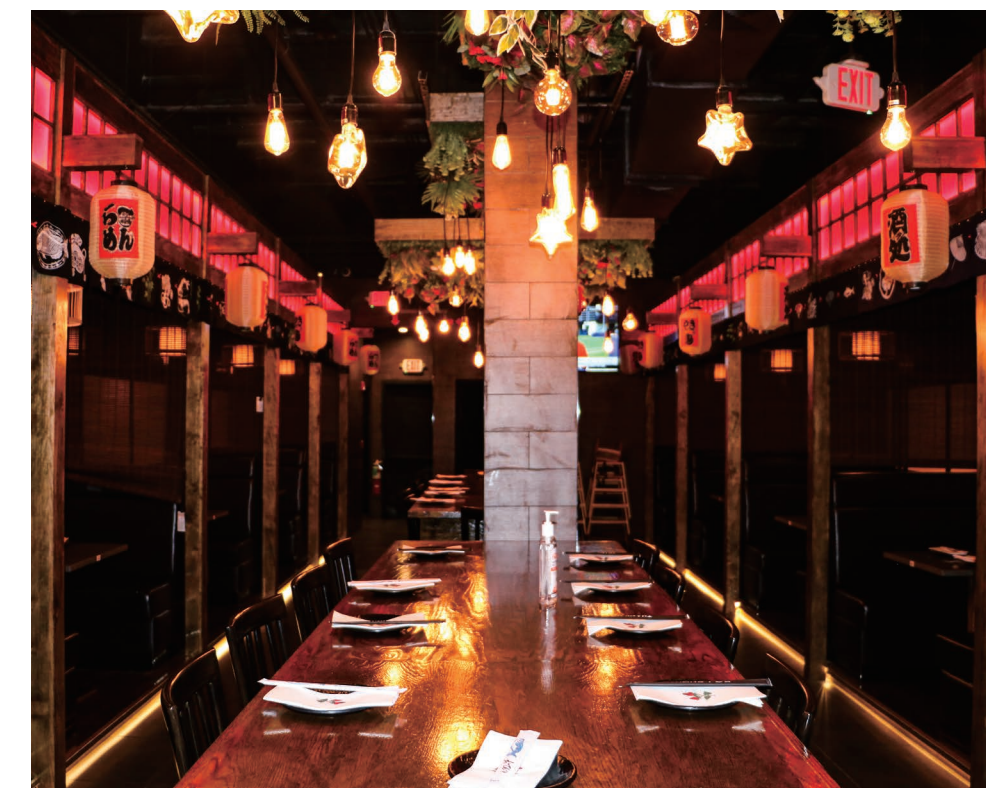
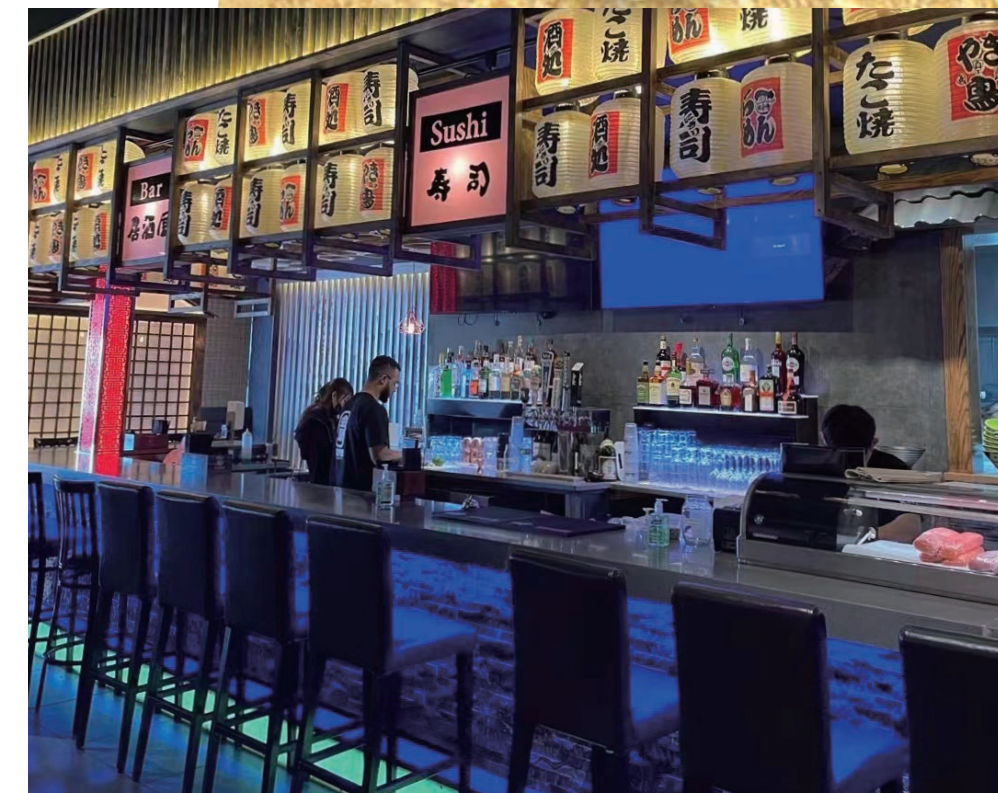
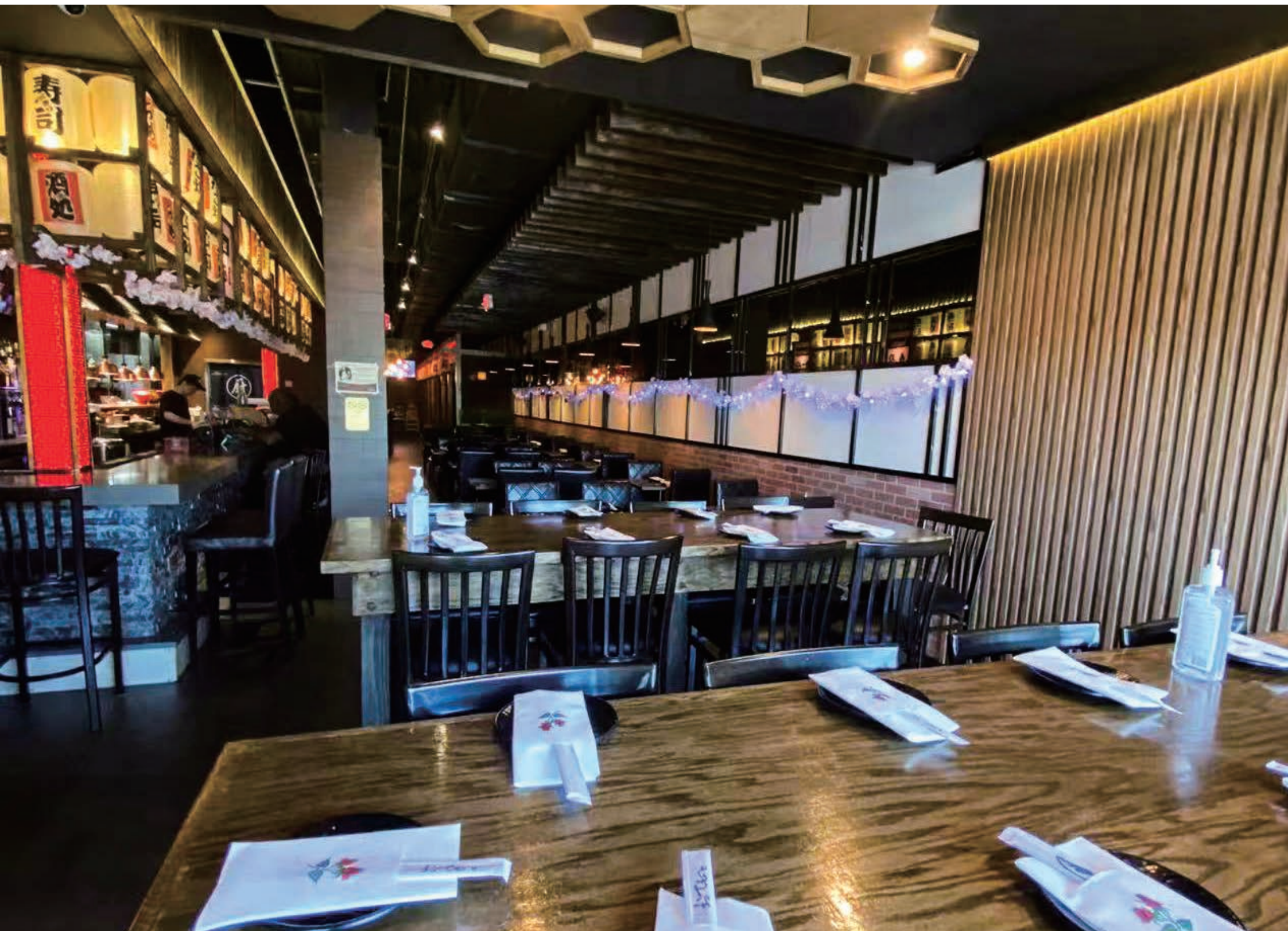
THE KINVA EXPERIENCE 金屋



OUR CUSTOMERS 金屋



INTERIOR SHOWCASE 金屋





NEW STORE FLOOR PLAN



OUR SITE REQUIREMENTS



OPERATIONAL USE

Full Service/Counter Service
Ramen/Sushi Restaurant



TARGETED POPULATION DENSITY

150,000 Population within
a Designated Trade Area



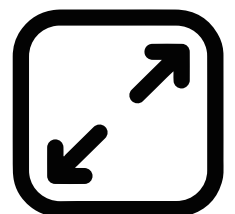
TARGETED INCOME RANGE

Above Median Household Income



PARKING

50+



SPACE REQUIREMENT

2,000 - 4,500 SF
2nd gen restaurant space preferred

歡迎・豪快
本物・黄金色





BENNETT REALTY & DEVELOPMENT
LICENSED REAL ESTATE BROKERS
NJ, NY, CT, PA

NEW JERSEY
51 E. MAIN STREET
HOLMDEL, NJ 07733

PH 732.837.4060
FAX 732.963.2433
W BENNETTREALTYLLC.COM

KINYA RAMEN • SUSHI • BAR | REAL ESTATE DEVELOPMENT 2024

Although all information regarding property for sale, rental or financing is from sources deemed reliable such information has not been verified and no express representation is made nor is any to be implied as to the accuracy thereof, and it is submitted subject to errors, omissions, change of price, rental or other conditions, prior sale, lease or financing, or withdrawal with out notice.



KINYA
RAMEN • SUSHI • BAR



FOR MORE INFORMATION CONTACT:
WILLIAM LENAZ,
RETAIL LEASING SPECIALIST

732.837.4862 | 732.580.9985
WLENAZ@BENNETTREALTYLLC.COM