

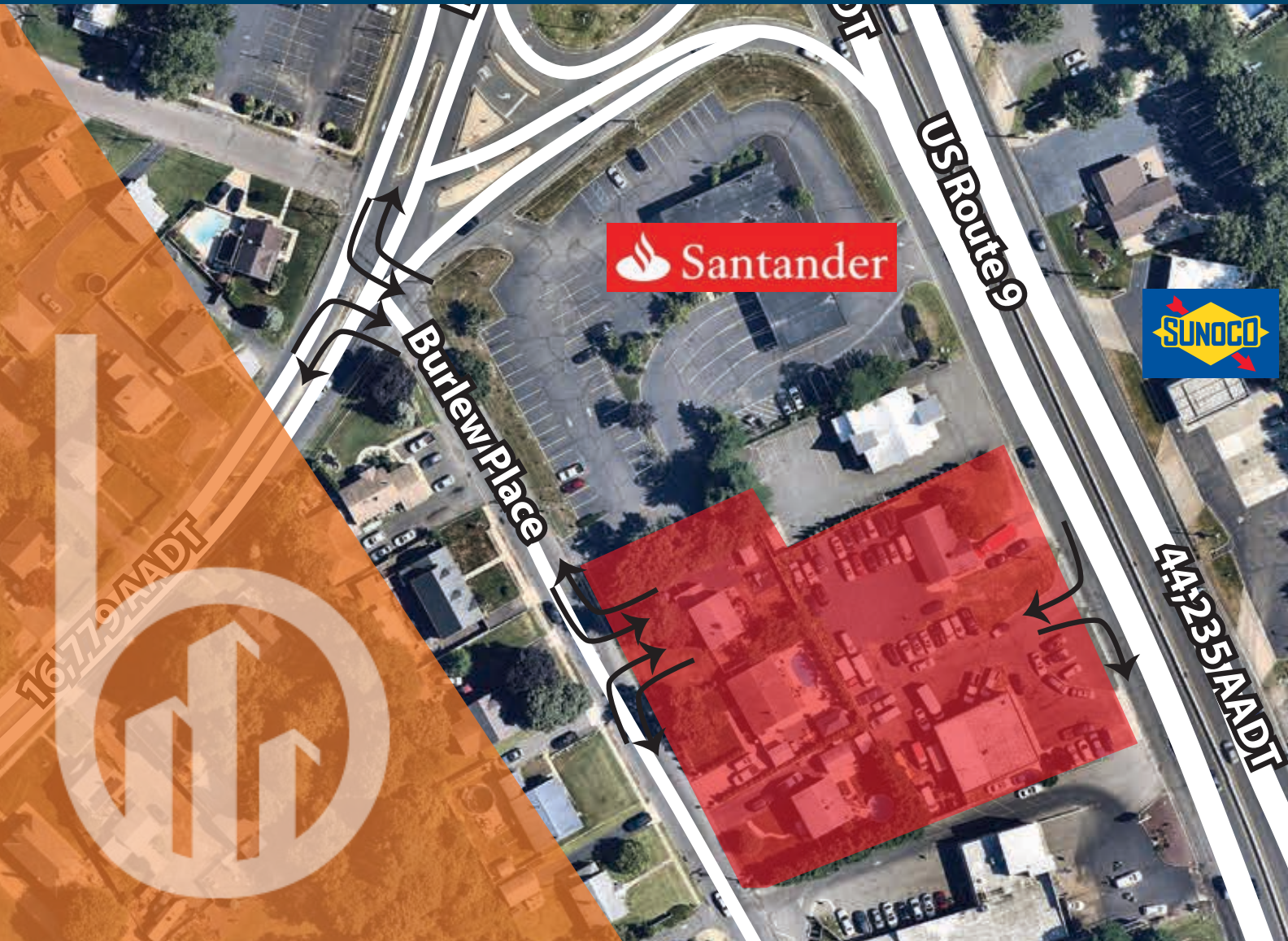
928 ROUTE 9

Route 9 and Burlew Place | Sayreville, NJ

AVAILABLE FOR LEASE

1.3 ACRE
AVAILABLE

- Pad Site Available for Ground Lease or Build to Suit
- Road improvements scheduled for 2023
- Will provide full access to Burlew Place facilitating Route 9 accessibility from Bordentown Avenue
- Direct Access From Route 9 South
- Access From Route 9 North Via The Bordentown Avenue Exchange
- Zoned Highway Business (B-3)
- Strong Traffic Counts Surround The Site



For more information, please contact:

Joel Dicker
908.610.8488 • joel@bennettrealtyllc.com

BENNETT REALTY & DEVELOPMENT LLC - LICENSED REAL ESTATE BROKERS NJ, NY, CT, PA - 24 S HOLMDEL ROAD, HOLMDEL, NJ 07733 - 732.837.4060 - WWW.BENNETTREALTYLLC.COM
ALTHOUGH ALL INFORMATION REGARDING PROPERTY FOR SALE, RENTAL OR FINANCING IS FROM SOURCES DEEMED RELIABLE SUCH INFORMATION HAS NOT BEEN VERIFIED, AND NO EXPRESS REPRESENTATION IS MADE NOR IS ANY TO BE IMPLIED AS TO THE ACCURACY THEREOF, AND IT IS SUBMITTED SUBJECT TO ERRORS, OMISSIONS, CHANGE OF PRICE, RENTAL OR OTHER CONDITIONS, PRIOR SALE, LEASE OR FINANCING, OR WITHDRAWAL WITHOUT NOTICE.

bennett
REALTY & DEVELOPMENT

Potential Site Plan

928 Route 9 | Sayreville, NJ

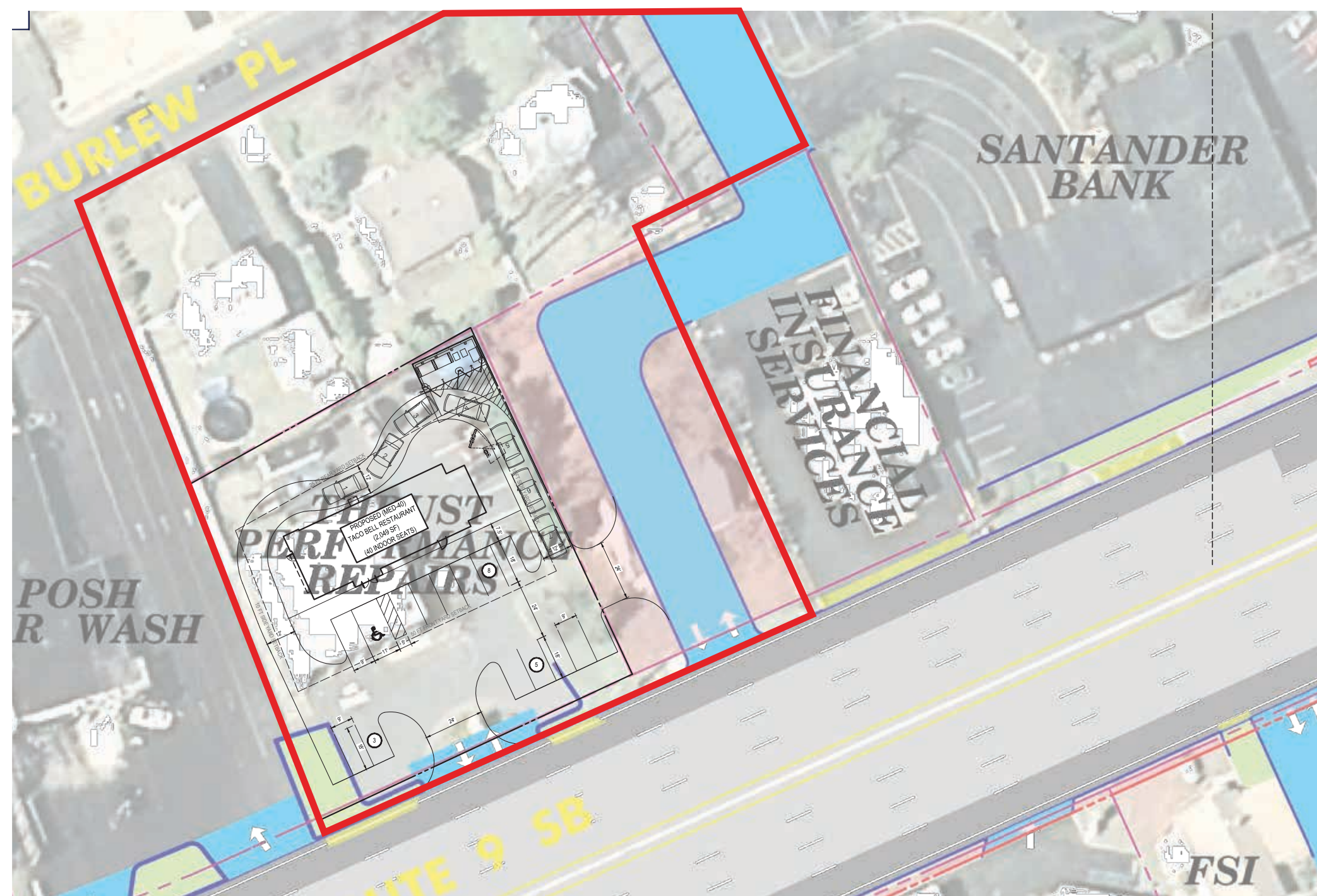


For more information, please contact:

Joel Dicker
908.610.8488 • joel@bennettrealtyllc.com

BENNETT REALTY & DEVELOPMENT LLC - LICENSED REAL ESTATE BROKERS NJ, NY, CT, PA • 24 S HOLMDEL ROAD, HOLMDEL, NJ 07733 • 732.837.4060 • WWW.BENNETTREALTYLLC.COM
ALTHOUGH ALL INFORMATION REGARDING PROPERTY FOR SALE, RENTAL OR FINANCING IS FROM SOURCES DEEMED RELIABLE SUCH INFORMATION HAS NOT BEEN VERIFIED, AND NO EXPRESS REPRESENTATION IS MADE NOR IS ANY TO BE IMPLIED AS TO THE ACCURACY THEREOF, AND IT IS SUBMITTED SUBJECT TO ERRORS, OMISSIONS, CHANGE OF PRICE, RENTAL OR OTHER CONDITIONS, PRIOR SALE, LEASE OR FINANCING, OR WITHDRAWAL WITHOUT NOTICE.

bennett
REALTY & DEVELOPMENT

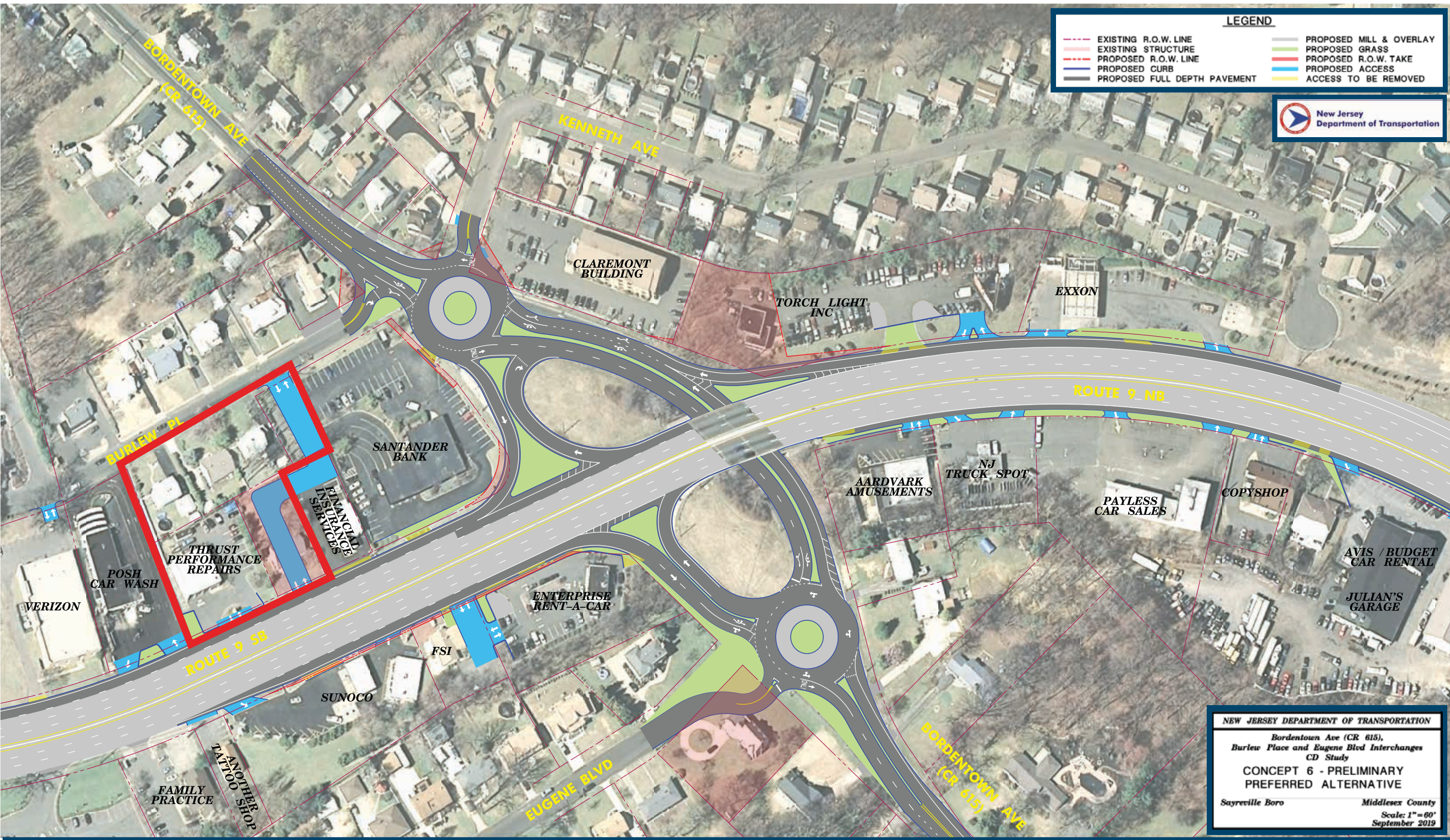


For more information, please contact:

Joel Dicker
908.610.8488 • joel@bennettrealtyllc.com

BENNETT REALTY & DEVELOPMENT LLC - LICENSED REAL ESTATE BROKERS NJ, NY, CT, PA - 24 S HOLMDEL ROAD, HOLMDEL, NJ 07733 - 732.837.4060 - WWW.BENNETTREALTYLLC.COM
ALTHOUGH ALL INFORMATION REGARDING PROPERTY FOR SALE, RENTAL OR FINANCING IS FROM SOURCES DEEMED RELIABLE SUCH INFORMATION HAS NOT BEEN VERIFIED, AND NO EXPRESS REPRESENTATION IS MADE NOR IS ANY TO BE IMPLIED AS TO THE ACCURACY THEREOF, AND IT IS SUBMITTED SUBJECT TO ERRORS, OMISSIONS, CHANGE OF PRICE, RENTAL OR OTHER CONDITIONS, PRIOR SALE, LEASE OR FINANCING, OR WITHDRAWAL WITHOUT NOTICE.

bennett
REALTY & DEVELOPMENT



For more information, please contact:

Joel Dicker
908.610.8488 • joel@bennettrealtyllc.com

BENNETT REALTY & DEVELOPMENT LLC • LICENSED REAL ESTATE BROKERS NJ, NY, CT, PA • 24 S HOLMDEL ROAD, HOLMDEL, NJ 07733 • 732.837.4060 • WWW.BENNETTREALTYLLC.COM
ALTHOUGH ALL INFORMATION REGARDING PROPERTY FOR SALE, RENTAL OR FINANCING IS FROM SOURCES DEEMED RELIABLE SUCH INFORMATION HAS NOT BEEN VERIFIED, AND NO EXPRESS REPRESENTATION IS MADE NOR IS ANY TO BE IMPLIED AS TO THE ACCURACY THEREOF, AND IT IS SUBMITTED SUBJECT TO ERRORS, OMISSIONS, CHANGE OF PRICE, RENTAL OR OTHER CONDITIONS, PRIOR SALE, LEASE OR FINANCING, OR WITHDRAWAL WITHOUT NOTICE.

